

ANNUAL EXHIBITION FRAMING GUIDELINES FOR WATERCOLOUR PAINTINGS

Paintings entered in the WSQ Annual Exhibition must be framed to an archival and professional standard, otherwise they will not be accepted. Whether having your painting custom framed or purchasing ready-made frames & mats to frame yourself the following guidelines must be adhered to:

Please check the links below as our sponsors Frame Warehouse have demonstrations of some of these steps on YouTube.

COVERING / GLAZING

Glass or high-quality acrylic coverings like Plexiglass or Perspex.

MAT BOARD

An acid free mat board must be used to mount the painting both for presentation and to ensure the painting does not come into contact with the glass where it can trap moisture, be affected by heat etc.

HINGING TAPE

Secure the painting to the mat board along the top edge only, using 2-3 small pieces of acid-free hinging tape. This allows the paper to expand and contract.

- **Unacceptable materials:** Masking tape and duct tape must not be used.
- **Reference:** [Hinge your artwork](#).

BACKING BOARD

An archival quality backing board must be used when framing your painting.

- **Acceptable Materials:** Foam core or core flute.
- **Unacceptable Materials:** Masonite, MDF or similar backing boards are prohibited.

FLOAT MOUNTING

Float mounting a painting where the painting is not in contact with the glass is also acceptable using acid free materials.

FINISHING

The glass, mat, painting and backing board should then be held in place in the frame with suitable metal points (most ready to use frames come with these already). This securely holds everything within the frame in place.

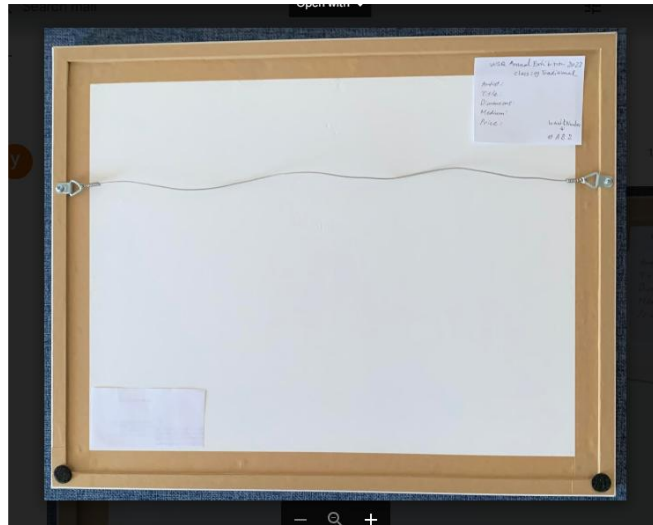
- **Reference:** [‘Fit your art to the frame’](#)

ANNUAL EXHIBITION FRAMING GUIDELINES FOR WATERCOLOUR PAINTINGS

SEALING

To prevent insects and dust from entering the frame, seal all sides of the back using an **adhesive framing tape** to cover the gap between the backing board and the frame. Wide paper packaging tape from stationery stores is a suitable alternative. To finish your framing, felt dots should be adhered onto the bottom corners (see right).

- **Acceptable Materials:**
Adhesive framing tape or wide paper packaging tape.
- **Unacceptable Materials:** Masking tape or duct tape



HANGING

Finally, an appropriately durable cord or wire should be affixed to the back of the frame using metal D-rings. Frame Warehouse sells rope kits for this purpose.

- **Hardware:** Use only metal D-rings to attach a durable cord or wire for hanging.
- **Positioning:** Place the D-rings one-third of the frame's height from the top.
- **Cord/Wire Slack:** Ensure the cord or wire has enough slack so that, when tightened, the top of the cord/wire is approximately halfway between the D-rings and the top of the frame.
- **Reference:** [Attach a Rope](#).

UNFRAMED PAINTINGS

Unframed paintings must also adhere to archival standards, using acid-free materials. This includes matting, hinging, and backing boards. For protection and neat presentation, place unframed paintings in a clear cellophane sleeve.

WSQ members have access to mat cutting equipment at the Hub, along with written instructions for its use.